



Release Notes

Leaf Capture Software Version 11.2.4

Copyright

© Kodak 2009. All rights reserved. Kodak, Leaf, the Leaf logo, and Aptus are trademarks of Kodak.

This document is also distributed in Adobe Systems Incorporated's PDF (Portable Document Format). You may reproduce the document from the PDF file for internal use. Copies produced from the PDF file must be reproduced in whole.

Trademarks

Kodak and Leaf are trademarks of Kodak.

Adobe, Acrobat, Adobe Illustrator, Distiller, Photoshop, PostScript, and PageMaker are trademarks of Adobe Systems Incorporated.

Apple, iMac, Power Macintosh, Mac OS, AppleShare, AppleTalk, TrueType, ImageWriter, and LaserWriter are registered trademarks of Apple Computer, Inc. Macintosh is a trademark of Apple Computer, Inc., registered in the U.S.A. and other countries.

FCC Compliance

Any Kodak equipment referred to in this document complies with the requirements in part 15 of the FCC Rules for a Class A digital device. Operation of the Kodak equipment in a residential area may cause unacceptable interference to radio and TV reception, requiring the operator to take whatever steps are necessary to correct the interference.

Equipment Recycling



In the European Union, this symbol indicates that when the last user wishes to discard this product, it must be sent to appropriate facilities for recovery and recycling.

Contact your local Kodak representative or refer to <http://www.kodak.com/go/recycle> for additional information on the collection and recovery programs available for this product.

Limitation of Liability

The product, software or services are being provided on an "as is" and "as available" basis. Except as may be stated specifically in your contract, Kodak expressly disclaims all warranties of any kind, whether express or implied, including, but not limited to, any implied warranties of merchantability, fitness for a particular purpose and non-infringement.

You understand and agree that, except as may be stated specifically in your contract, Kodak shall not be liable for any direct, indirect, incidental, special, consequential or exemplary damages, including but not limited to, damages for loss of profits, goodwill, use, data or other intangible losses (even if Kodak has been advised of the possibility of such damages), resulting from: (i) the use or the inability to use the product or software; (ii) the cost of procurement of substitute goods and services resulting from any products, goods, data, software, information or services purchased; (iii) unauthorized access to or alteration of your products, software or data; (iv) statements or conduct of any third party; (v) any other matter relating to the product, software, or services.

The text and drawings herein are for illustration and reference only. The specifications on which they are based are subject to change. Kodak may, at any time and without notice, make changes to this document. Kodak assumes no liability for technical or editorial errors or omissions made herein, and shall not be liable for incidental, consequential, indirect, or special damages, including, without limitation, loss of use, loss or alteration of data, delays, or lost profits or savings arising from the use of this document.

<http://www.leaf-photography.com>

Internal 739-00541A-EN
Revised 23 February 2009

Contents

Introduction	1
New Features	1
Uploading Firmware to Leaf AFi/AFi-II Camera Systems	3
Minimum System Requirements.....	4
Leaf Product Compatibility.....	4
Leaf Capture Installation Tips.....	5
General Leaf Tips	6
Fixed Issues	8
Known Issues	10
Leaf Capture Version 11 History	13

Introduction

Leaf® Capture is an image capture and processing workflow software that has been designed for you to make the most of the images you take with your Leaf products, and to improve your productivity.

The intuitive Leaf Capture user interface guides you through the image capture workflow. Since you can use it to check and perfect your images while you shoot, Leaf Capture serves as the ideal match for high-volume productions on tight deadlines, such as catalog and fashion shoots. Leaf Capture enables you to produce outstanding quality images with fine details and accurate colors. Since the software is focused on professional photographic requirements, it supports editing and managing of files in both tethered and portable shooting modes.

New Features

In addition to significant performance enhancements, the following features have been added to this version of the Leaf Capture software:

Single Workflow for Leaf AFi and Aptus Imaging Modules

You can now use this version of Leaf Capture software with all Leaf AFi and Aptus imaging modules, streamlining the workflow for photographers and digital operators using multiple Leaf imaging modules.

Processing Multiple Files Taken Using Different Imaging Modules

You can now batch process multiple files that were taken using different imaging modules.

New Shortcut keys for Live View

The following keyboard shortcuts are now available to control live view:

Commands	Shortcut for Mac OSX
Play live view	Command L
Stop live view	Command . (period)

New Features in the Leaf AFi Camera Firmware v2.13

Connect your Leaf AFi or AFi-II camera system to the Leaf Capture v11.2.4 software to gain the v2.13 firmware with the following new features:

Improved Flash Indicators

The flash indicator in the viewfinder now indicates that an attached SCA flash is recycled and ready. The brackets on either side of the flash symbol now indicate that an SCA flash is attached.

New Controls Lock

You can now lock the camera controls, including manual dials on the left side of camera, to avoid changing your settings while you work.

To lock the camera controls:

1. Push the options button, and use the rear dial to select **CONTROLS**.
2. Use the front dial to select **LOCKED**, and push the shutter release button.
The controls on the camera are now disabled, and turning the controls cannot affect your settings.
3. Repeat these steps selecting **UNLOCK** to enable the controls.

Notes:

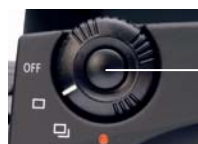
- If you move any of the dials while the controls are locked, the new setting will take effect as soon as the controls are enabled.
- If the camera system enters sleep mode, the locks are cancelled when you reactivate the camera system.

Shots Counter

When using a large CompactFlash card, the countdown of images starts from 99 or less. If the card has 100-199 images remaining, **1H** (one hundred) is displayed until you reach 99. Larger numbers of images are displayed in a similar manner (**2H**, **3H**, **4H**, and so on).

Cancel Sequences

You can now cancel your active programmed sequences (exposure bracketing, focus bracketing, and self-timer) by pushing and then releasing the shoot options button.



Shoot options button

Uploading Firmware to Leaf AFi/AFi-II Camera Systems

When connecting a Leaf AFi or AFi-II camera system to Leaf Capture v11.2.4 for the first time, version 2.13 firmware will be loaded to the imaging module.

To update your camera system with the v2.13 firmware:

1. Launch the Leaf Capture software.
2. Make sure that the camera system is turned off.
3. Connect your imaging module to the computer.

The firmware is uploaded. When complete, a message appears prompting you to turn on the camera system.

4. Turn on the camera system.
5. Disconnect and reconnect the FireWire cable from the imaging module.

Important: The v2.13 firmware is compatible with Leaf Capture versions 11.2.3 and higher. After connecting and upgrading to the new firmware, you cannot work with Leaf Capture versions 11.2.0.2 and earlier.

Should you need to roll back to v11.2.0.2 or earlier, you need to start the camera in boot mode and reinstall the firmware using Leaf Capture v11.2.0.2. For a detailed description of the procedure, refer to the *Firmware update was unsuccessful* section in the *Troubleshooting* chapter of your Leaf AFi or AFi-II User Guide.

Minimum System Requirements

The following system components are required for running the Leaf Capture software:

	PowerPC-based Macintosh	Intel-based Macintosh
Processor	Dual Core/Processor G5	Intel® Core™ Duo or Xeon®
Processor speed	1.8 GHz	1.83 GHz
Memory	2 GB	2 GB
Operating system	Mac OS X, version 10.5	Mac OS X, version 10.5

Leaf Product Compatibility

This version of the Leaf Capture software supports all released Leaf AFi and Aptus products:

- Leaf AFi-II 10
- Leaf AFi 7
- Leaf Aptus-II 7
- Leaf Aptus™ 75S
- Leaf AFi-II 7
- Leaf AFi 6
- Leaf Aptus-II 6
- Leaf Aptus 65S
- Leaf AFi-II 6
- Leaf AFi 5
- Leaf Aptus 54S
- Leaf Aptus 75
- Leaf Aptus 65
- Leaf Aptus 22
- Leaf Aptus 17

Note: This version does not support Leaf Valeo imaging modules.

Leaf Capture Installation Tips

Installing Leaf Capture

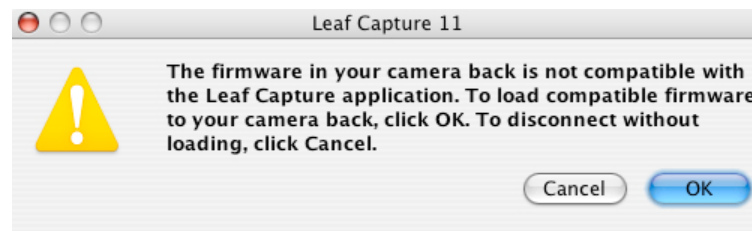
The Leaf Capture installation wizard requires that no other applications are running during the installation. If you are working in other applications, make sure you save your work before launching the Leaf Capture installation.

Computer Restarts After Installation

If a driver that is new to your computer is installed during the Leaf Capture version 11.2.4 software installation, Leaf Capture restarts your computer at the end of the installation. If you are working in other applications, make sure you save your work first.

Updating the Imaging Module Firmware

When you connect your imaging module to the Leaf Capture software, the following message appears:



- Click **OK**. The imaging module firmware is updated. This process takes approximately 10 minutes.

Preferences are Reset After Installation

The installation automatically resets your Leaf Capture preferences.

Note: If you have multiple user accounts, the preferences are reset only for the user who installs the Leaf Capture software. All other users must manually reset their preferences:

- Locate **Applications > Leaf Capture 11 > Utilities**, and double-click **Reset Preferences**.

General Leaf Tips


Using your CF Card in Multiple Imaging Modules

When using a CF card in multiple imaging modules, it is recommended that you perform a quick format each time you switch the card between imaging modules.

Switching Between Shooting Modes



When switching from portable to tethered mode, wait for the CF card icon to stop running before connecting the FireWire cable to your computer.

When tethered, eject the CF card via the Apple® Macintosh® desktop, and disconnect the FireWire cable only when the connect icon  is green.

Using a Second Battery with Your Leaf AFi/AFi-II Imaging Module

If you are using a second battery on the Leaf AFi or AFi-II imaging module, you must manually switch off the imaging module in the following circumstances:

- When you shut down the Leaf AFi or AFi-II camera system
- When the camera system enters power save mode

Conserving Battery Power

Working in mirror-up mode can consume a lot of battery power. To conserve your batteries, minimize the time you work in mirror-up mode.

Locating the Leaf Tables

The Leaf tables are located under **Leaf Images > Leaf Tables** in the **Pictures** folder of each user.

Firmware Files Change in Location

The firmware files are now located in the application package.


Undoing Unsaved Changes

To undo unsaved changes to image settings, select **In File** in the predefined settings list.

Applying the Settings of One File to Another File

To find out how to apply a file's settings to another file, see Leaf Technical Bulletin #2, *How to adjust multiple images*, available at: <http://www.leaf-photography.com/support/techbulletin>.

Removing a CompactFlash Card From a Leaf Imaging Module In Tethered Mode, Connected to a Macintosh Computer

To remove the CF card from the Leaf imaging module, click **Disconnect**  in the Leaf Capture software, and eject the CF card via the Apple Macintosh desktop.

Removing the CompactFlash® (CF) memory card from the Leaf imaging module while shooting in tethered mode stops the communication.

In Portable Mode



Before you remove the CF card from the imaging module, make sure that the CF card icon is not showing.

Shooting While the Imaging Module Is Busy



Wait until the busy symbol disappears before shooting.

Working with Seamless Switch

When disconnecting the FireWire cable in tethered mode while a CF card is inserted in the imaging module, a message appears in the Leaf Capture software. Click **OK** before reconnecting the cable.

Fixed Issues

The following issues were fixed in this version of the Leaf Capture software.

Leaf Capture Software Fixed Issues

Leaf Capture Does Not Reopen After Setting a Base File Name with a Period

If you quit Leaf Capture after a shoot session using a base file name containing a period, the software did not reopen. This issue is now resolved.

Preview Does Not Behave as Expected

When you make an adjustment, save the image as a copy in the same folder, and then move it to another folder, the preview of the original image does not now appear pixilated, and the histograms are now available.

Camera Control Exposure Meter

After using B or T mode, the exposure meter in the **Shoot** panel **Camera Control** area is now available.

Opening Mos Files in Photoshop

Mos files shot tethered to a PowerPC-based Mac and then moved to and flagged on an Intel-based Mac can now be opened in Adobe® Photoshop®.

Sort by Leaf Back

You can now sort your images by imaging module using the **Sort By > Leaf Back** option in the **View** menu.

Leaf AFi Camera System Fixed Issues

Stuck Mirror

Mirrors no longer get stuck at shutter speeds of 1/100 and above.

Dark Frames

The issue with dark frames has been fixed in this version.

Exposure Bracketing Without a SCA Flash

You can now perform exposure bracketing without using an SCA flash.

Polarity in EV Compensation Histogram

The histogram polarity issue has now been fixed.

Setting EV Compensation when the Histogram is Displayed

When adjusting the EV compensation after a shot when the histogram is displayed, the effect of the adjustment now behaves as expected.

Leaf AFi-II and Aptus II Do Not Correctly Display Images Shot With a Factory Default Gray Balance Preset

Shots taken with a gray balance factory default preset are now displayed accurately on the Leaf AFi-II and Aptus-II imaging module display.

Known Issues

This section lists known problems in the Leaf Capture software and imaging module. They may be outstanding issues from a previous release, or new problems. When a problem listed here is resolved, the solution is described in the *Fixed Issues* section of the release notes for the next version of the Leaf Capture software.

Leaf Capture Software Issues

Predefined Settings List

After adjusting and saving an image, then adding multiple images and applying the change to the selection, the active setting is lost from the predefined settings list if you remove any image from the selection.

Workaround: Save the images after applying the change.

Gray Balance Picker in Live View

In live view, after you click using the gray balance picker tool, the cursor changes from the picker to the regular mouse pointer. However, if you continue to click the live view display, the gray balance is updated according to the spot you clicked.

Workaround: After using the gray balance picker to achieve a gray balance you are happy with, choose another tool to disable the gray balance picker.

Moving a Moiré Reduction Selection over the Display

When moving a moiré reduction selection over the zoomed-in image in the display, mouse-control of the selection is lost when you reach the edge. Click the selection again to regain control.

Dragging and Dropping after Processing

You cannot drag and drop files to a different partition after processing.

Workaround: In the **Edit** menu, select **Copy to Folder** or **Move to Folder** to copy or move your files.

File Names Including Forward Slash Character

When processing images with the forward slash “/” character in the file name, the Leaf Capture software stops responding. Do not use this character in file names.

Misleading Message After Reconnecting After Shooting with a Custom Lens Calibration File

When you disconnect the imaging module from the Leaf Capture software by way of clicking disconnect or closing Leaf Capture, but not physically disconnecting the FireWire cable, the custom lens calibration file is still loaded in the imaging module.

Upon reconnection, the imaging module searches for the custom lens calibration file on your computer. If you changed the location or name of the custom lens calibration file, a message appears warning you that it cannot locate the custom lens calibration file, and that it will use the default lens calibration file.

However, for as long as the imaging module is not physically disconnected, it retains the custom lens calibration file in its memory, and continues to use the custom lens calibration file until you load a new file, or until you physically disconnect the imaging module by removing the FireWire cable.

Workaround: If you want to use the default lens calibration file, either disconnect and reconnect by physically removing and replacing the FireWire cable, or reload the default lens calibration file.

Moving Folders in the Browse Tree

After you move folders in the **Browse** panel directory area, the contents of the moved folder are not displayed.

Workaround: To view the folder’s contents, select another folder and then select the folder that you are working on.

Proofing Output Color at a Magnification Greater Than 70%

If you select a CMYK print space or a limited gamut RGB working space on the **Process** panel’s **Color** tab, the correct color is displayed in the Detail pane or in the Preview area only when the image is magnified at a level greater than 70%.

Workaround: To proof output color, view the image in the Detail pane or Preview area at a magnification level greater than 70%.

Help System

At this time, the help system is available only in English.

Leaf AFi Camera System Issues

Limitations with Cable Release

Cable release has the following limitations:

- You cannot use cable when the camera system is set to B or T modes.
- When pressing the cable release button in single mode, the camera shoots continually. For one shot, press once.
- You cannot activate the self-timer using the cable release.

Shooting Using the AFi-II 10 Imaging Module with Mamiya RZ Camera

When shooting continuously without waiting for the ready beep, and with no defined orientation, in some cases the images are taken with incorrect orientation.

Workaround: In portable mode, set the orientation of your shot to in the camera settings menu in Camera view:

1. Tap **Orientation**.
2. Tap an orientation.
3. Tap **ok**.

In tethered mode, select an orientation in the camera settings in Leaf Capture.

Leaf Capture Version 11 History

The following new features were released in previous versions of Leaf Capture:

Leaf Capture 11.2

- Synchronized communication with Leaf AFi/AFi-II camera system.
- Color live view.
- Synchronized compare view.
- Improved image quality.
- Automatic software update notifications.
- Open and Save dialog boxes open automatically on the last selected folder.
- Renamed ICC profiles.
- Dynamic imaging module buttons orientation.
- Seamless disconnect.
- Cable shutter release.
- Imaging module display when tethered.
- Histogram on the handgrip GUI.
- Schneider electronic shutter control.
- Image and camera settings now separate on the imaging module.

Leaf Capture 11.1.1, Camera Firmware version 2.10

- Capture Delay: set a minimum delay between shots.
- Improved autofocus accuracy.
- Improved power management in tethered shooting.
- Improved mirror movement to reduce vibration.
- Improved TTL communication with SCA flash.
- When turning on the camera system, the imaging module turns on as expected.
- The AF assist light on an attached SCA flash no longer turns on when the light level drops.
- The camera AF assist light only turns on when the light level is low.

- If the connection between the lens and camera body is disrupted, an error message is now displayed on the handgrip display.
- When you turn the camera system off, all programmed captures or sequences are aborted.
- When the CompactFlash[®] is full, a "Disk Full" message appears on the handgrip display, and all programmed captures or sequences are aborted.
- In continuous autofocus mode, you can release the shutter even while lens is focusing.
- In single autofocus mode, you cannot release the shutter until the camera is focused.
- The camera system can focus faster when the depth of field (DOF) is greater. When the DOF is less, the camera system will take more time to achieve focus.
- An icon appears on the handgrip display (in both automatic and enhanced modes) to indicate that the camera system is measuring exposure or focusing; another icon appears when the camera system has finished measuring the exposure or has achieved focus.
- Fixed issue: Leaf AFi Imaging Module User Button now behaves as expected.
- An error message and hourglass icon are now displayed in the following scenarios:

Message Displayed:	Scenario:
Back not ready	The imaging module is not ready to capture an image.
Flash not Ready	The attached SCA compatible flash is not ready to fire.
Capture Delay	A delay has been set between shots.
Storage	The CompactFlash card is full.
Lens unlocked	The lens release button is pushed in, or the lens is not fully locked.

Leaf Capture 11.1

- New compare view
- New create custom lens calibration files wizard
- Apply lens calibration to your images
- Improved flag behavior
- Automatic firmware update
- Improved JPEG preview
- Improved interactivity for the Adjust function sliders for MacPro 4-Core

Leaf Capture 11

- New collapsible sections in the Shoot panel
- Remote support for Leaf AFi and Rollei eShutter
- File numbering separator
- Shooting compressed images when tethered
- Easy-to-access ISO setting
- Leaf Live View
- Layout overlay
- Grid overlay
- Color temperature slider
- New user interface
- Increased stability
- Contax support
- Leaf WiView
- Dynamic display during image adjustment
- Automatically saved flags
- Separate camera and image settings
- Leaf Capture preferences
- Pausing the Process Queue
- Improved performance with Intel-based Mac