



Release Notes

Leaf Capture Software Version 11.1 Windows

Copyright

© Kodak 2008. All rights reserved. Kodak, Leaf, the Leaf logo, and Aptus are trademarks of Kodak.

This document is also distributed in Adobe Systems Incorporated's PDF (Portable Document Format). You may reproduce the document from the PDF file for internal use. Copies produced from the PDF file must be reproduced in whole.

Trademarks

Kodak and Leaf are trademarks of Kodak.

Adobe, Acrobat, Adobe Illustrator, Distiller, Photoshop, PostScript, and PageMaker are trademarks of Adobe Systems Incorporated.

Apple, iMac, Power Macintosh, Mac OS, AppleShare, AppleTalk, TrueType, ImageWriter, and LaserWriter are registered trademarks of Apple Computer, Inc. Macintosh is a trademark of Apple Computer, Inc., registered in the U.S.A. and other countries.

FCC Compliance

Any Kodak equipment referred to in this document complies with the requirements in part 15 of the FCC Rules for a Class A digital device. Operation of the Kodak equipment in a residential area may cause unacceptable interference to radio and TV reception, requiring the operator to take whatever steps are necessary to correct the interference.

Equipment Recycling



In the European Union, this symbol indicates that when the last user wishes to discard this product, it must be sent to appropriate facilities for recovery and recycling.

Contact your local Kodak representative or refer to <http://www.kodak.com/go/recycle> for additional information on the collection and recovery programs available for this product.

Limitation of Liability

The product, software or services are being provided on an "as is" and "as available" basis. Except as may be stated specifically in your contract, Kodak expressly disclaims all warranties of any kind, whether express or implied, including, but not limited to, any implied warranties of merchantability, fitness for a particular purpose and non-infringement.

You understand and agree that, except as may be stated specifically in your contract, Kodak shall not be liable for any direct, indirect, incidental, special, consequential or exemplary damages, including but not limited to, damages for loss of profits, goodwill, use, data or other intangible losses (even if Kodak has been advised of the possibility of such damages), resulting from: (i) the use or the inability to use the product or software; (ii) the cost of procurement of substitute goods and services resulting from any products, goods, data, software, information or services purchased; (iii) unauthorized access to or alteration of your products, software or data; (iv) statements or conduct of any third party; (v) any other matter relating to the product, software, or services.

The text and drawings herein are for illustration and reference only. The specifications on which they are based are subject to change. Kodak may, at any time and without notice, make changes to this document. Kodak assumes no liability for technical or editorial errors or omissions made herein, and shall not be liable for incidental, consequential, indirect, or special damages, including, without limitation, loss of use, loss or alteration of data, delays, or lost profits or savings arising from the use of this document.

<http://www.leaf-photography.com>

Internal 739-00490A-EN

Revised 3 August 2008

Contents

- Introduction..... 1
- Minimum System Requirements..... 1
- Recommended System Configuration..... 1
- Leaf Product Compatibility..... 2
- Leaf Capture Installation..... 3
- Main Features..... 9
- Known Issues 14
- Firmware..... 15

Introduction

Leaf® Capture is an image capture and processing workflow application that has been designed to help you to make the most of the images you take with your Leaf products.

The intuitive Leaf Capture user interface guides you through the image capture workflow. Since you can use it to check and perfect your images while you shoot, Leaf Capture serves as the ideal match for high-volume productions on tight deadlines, such as catalog and fashion shoots. Leaf Capture enables you to produce outstanding quality images with fine details and accurate colors. Since the software is focused on professional photographic requirements, it supports editing and managing of files in both tethered and portable shooting modes.

Minimum System Requirements

This version of Leaf Capture software supports Windows® XP Professional Service Pack 2 only.

Note: You must have Administration privileges on your computer in order to install and use the Leaf Capture software.

Recommended System Configuration

The recommended system configuration for running the Leaf Capture software is the Dell OptiPlex™ 755 MiniTower:

| Module | Description |
|----------------------------|----------------------------------------------------------------|
| Base | OptiPlex 755 MT E-Smart Core 2 Duo E4500 (2.20Ghz/800MHz/2MB) |
| Microsoft Operating System | Windows XP Professional SP2 With Media & VC Label - English |
| Memory | 2.0GB 800MHz NON-ECC DDRII Memory (2*1GB) |
| Hard Drive | 2*250GB (7,200rpm) Raid 1 SATA 3.0Gb/s Hard Drive |

The following FireWire board is recommended for use with your Leaf Aptus:

- LaCie® FireWire 400 PCI card (LaCie p/n 107355). Go to www.lacie.com for more information.

The following FireWire board is recommended for use with your Leaf Aptus, Leaf Aptus S, and Leaf AFi:

- FireboardBlue-e™ 1394a PCI-express adapter (Unibrain P/N: 1203). Go to www.unibrain.com for more information.

Leaf Product Compatibility

This version of the Leaf Capture software supports the following Leaf products:

- Leaf AFi 7
- Leaf AFi 6
- Leaf AFi 5
- Leaf Aptus™ 75S
- Leaf Aptus 65S
- Leaf Aptus 54S
- Leaf Aptus 75
- Leaf Aptus 65
- Leaf Aptus 22
- Leaf Aptus 17

Leaf Capture Installation

Note: You must have Administration privileges on your computer in order to install and use the Leaf Capture software.

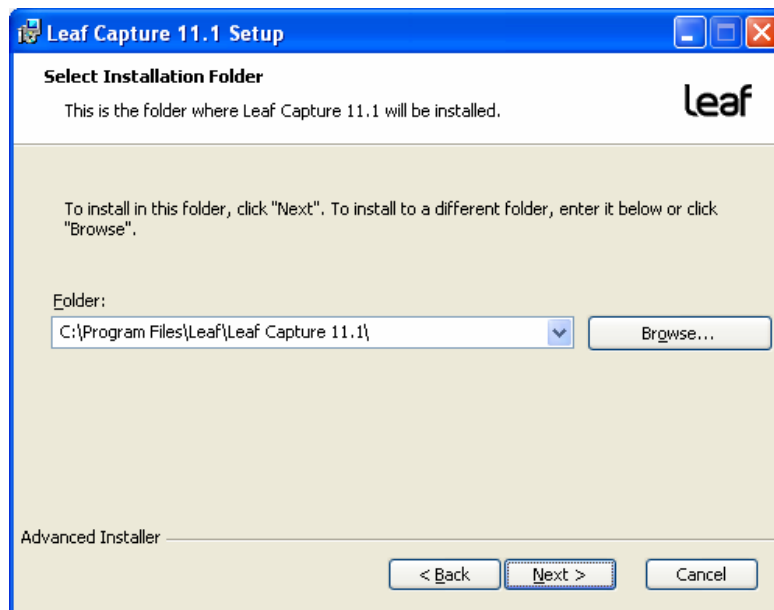
Note: Your imaging module must not be connected to the computer during the installation.

Installing Leaf Capture 11.1 Windows

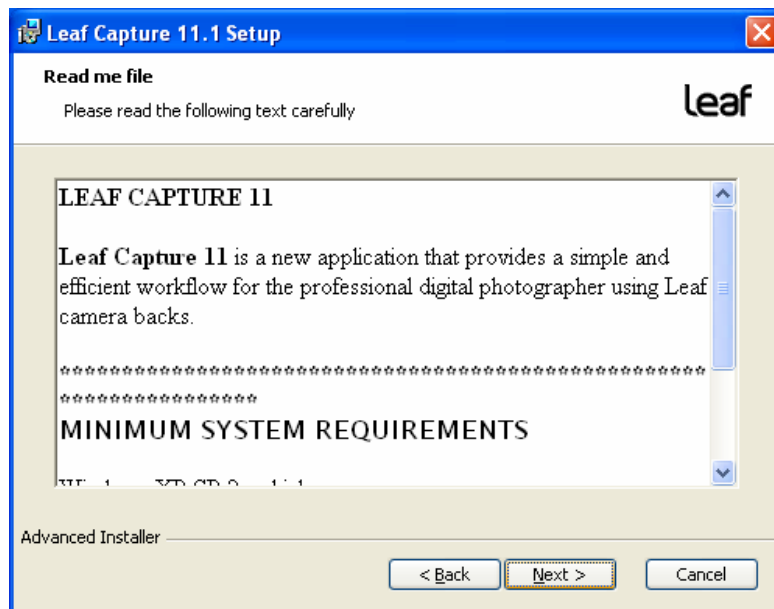
1. Double-click the Leaf Capture Installer icon



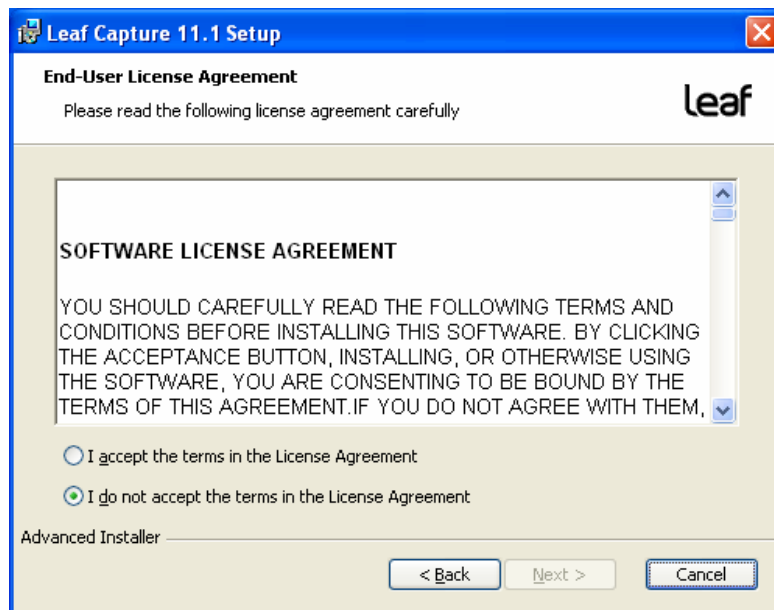
2. Click **Next**.



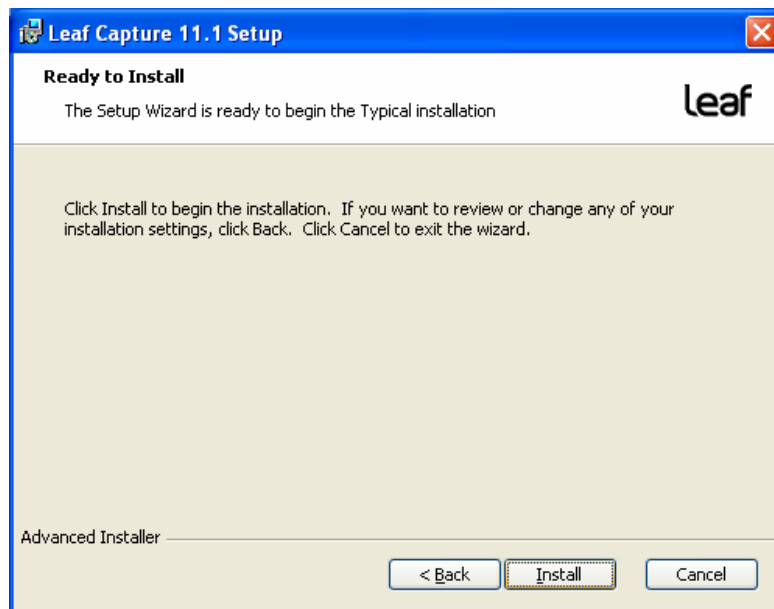
3. Browse to the desired installation folder and click **Next**.



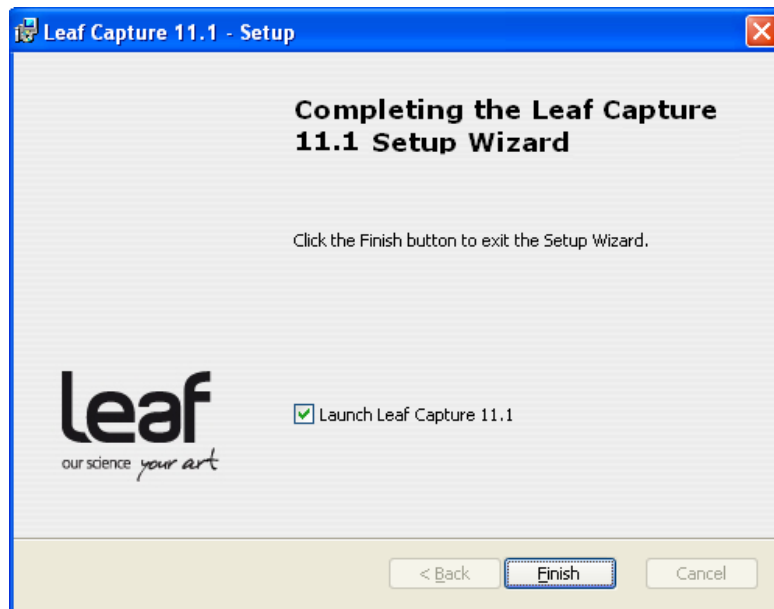
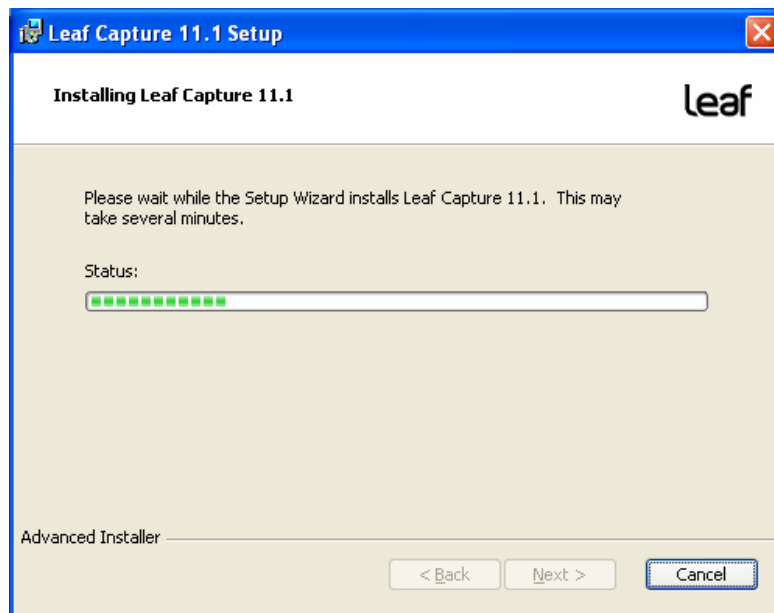
4. Click **Next**.



5. Select **I accept the terms in the License Agreement** and click **Next**.



6. Click **Install**.

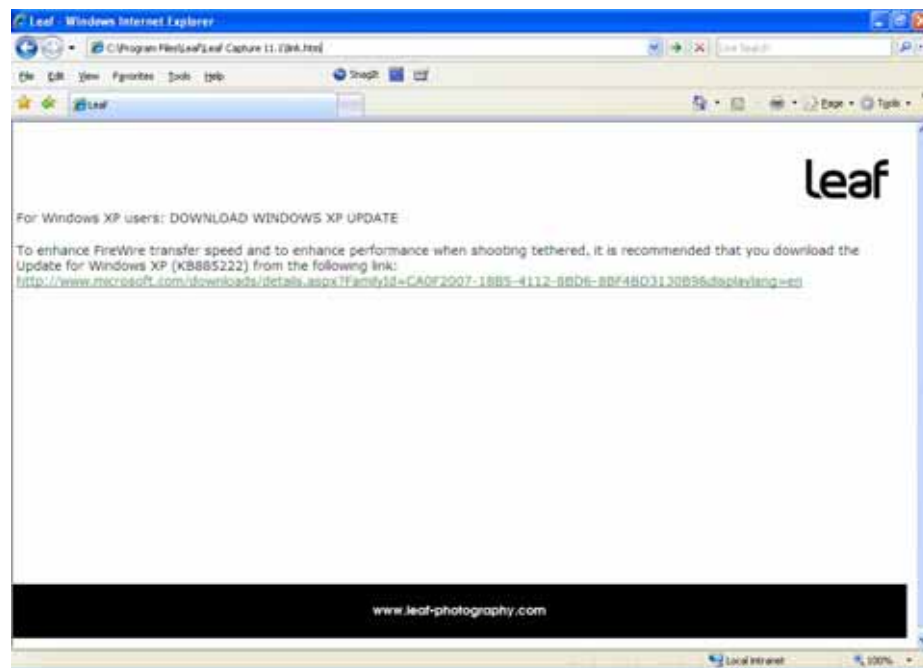


7. If this is the first time you are connecting your Leaf imaging module to your computer, clear the **Launch Leaf Capture 11.1** check box.
After installation, you must perform the Device Driver Installation Wizard and only then start the software.

8. Click **Finish**.

The Leaf Capture software is installed.

The following notice appears in your web browser:



9. If you use Windows XP, download the Windows XP update to enhance the FireWire transfer speed and your performance when shooting tethered.

10. Connect your imaging module to your computer.

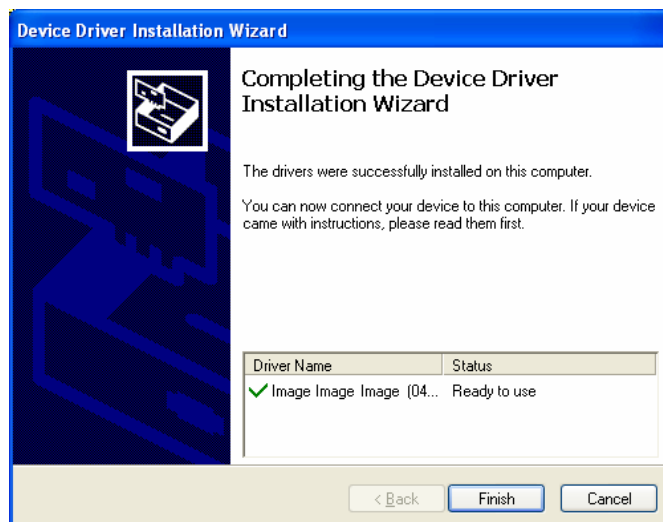
If this is the first time you are connecting your imaging module to your computer, follow the Device Driver Installation wizard.

Device Driver Installation Wizard

The first time that you connect your imaging module to the computer, the Device Driver Installation Wizard appears:



1. Click **Next**.



2. Click **Finish**.

Your computer will now work successfully with your imaging module.

3. Start the Leaf Capture software, and click **Connect** to connect to the imaging module.

Main Features

Compare View



The new compare view enables you to evaluate your images and to find your best shot in a series by comparing them to one another. Use compare view to compare two images or a selection of images.




When you compare two images, one is the master image and the second is the candidate, as indicated by a green frame. The master image is fixed, but the candidate image is dynamic, and changes as you select other images or flip through the images in the folder. If you find a candidate image that you prefer to the master image, you can use the new **Set candidate as master** button to set the candidate as the master image, and continue flipping through the images in the folder by holding down ALT and using the arrow keys.

Compare view has the same functionality as all other views. You can select and remove images that you wish to compare as a group or one by one using the familiar selection keys. You can open as many images as you want to compare. Each image has full preview functionality, meaning that you can compare images using the Leaf Capture tools—for example, by checking the focus of each image using the loupe tool.



Comparing two images

Compare two images to find your best shot in a series using a process of elimination.

1. Click  to open compare view.

Compare view becomes the view mode in the image area. The preview pane is the area where you compare your images. There is also a thumbnails strip which displays all of the images in your folder, as with other views. The thumbnails are displayed horizontal or vertical according to the last selected preview with horizontal or vertical thumbnails view.

Tip: Press the tab key to toggle the compare view size between the regular image area size and the size of the entire workspace.

2. Select two images for comparison by holding down cmd, and then clicking the desired images in the thumbnails strip.


The selected images appear in the preview area in an arrangement that optimizes their display size. The first image that you select is the candidate image, and has a green frame. The second image that you click is the master image, and has a black frame.

3. Compare and evaluate your images.
4. To toggle between the candidate and master images, click the master image (the image in the black frame) in the preview pane.

The selected image becomes the candidate image and has a green frame; the second image becomes the master image and has a black frame.

5. You can replace the candidate image in one of the following ways:
 - To select a specific image from the thumbnails, hold down ALT, and click the desired image. The selected image replaces the candidate image in the preview pane.
 - To flip through the images in your folder, hold down ALT, and use the arrow keys. As you flip through the images in the folder, the selected image replaces the candidate image in the preview pane.

As you flip through the images in the folder, compare them to the master image. If you find an image that you like better than the master image, you can set it as the master image. It then replaces the master image, and you can continue to flip through the images in the folder.

➤ To set the candidate image as the master image, click .

The candidate image is set as the master image. The new candidate image is then the next consecutive image in the folder.

Comparing multiple images

To add an image to the compare pane:

1. Hold down CMD, and click the desired image in the thumbnails strip.
2. Continuing to hold down CMD, continue to click as many images as you want in order to add them to the preview area for comparison.

To remove an image in the compare pane:

1. Hold down CMD, and click the desired image in the preview pane or thumbnails strip.
2. Continuing to hold down the CMD, continue to click as many images as you want to remove from the preview area.

To replace an image in a multiple selection:

When comparing multiple images, you can replace one image in the preview pane.

1. In the preview pane, click the image that you want to replace.
The image has a green frame.
2. Do one of the following:
 - To select a specific image from the thumbnails, hold down ALT, and click the desired image.
 - To flip through images, hold down ALT, and use the arrow keys.

The image is replaced by the selected image, or by each image as you flip through the images in the folder.

To refresh the layout:

After you remove images from the preview pane, you can refresh the layout so that the images are reordered in series in the preview pane.

- From the **View** menu, select **Compare Actions > Refresh Layout**.

The images appear in the preview pane in an arrangement that optimizes their display size.

Create Custom Lens Calibration Files Wizard

Shooting images with wide angle lenses and exploiting large format camera movements often results in lens fall-off and color distortion. To correct this, create a lens calibration file and load it in the imaging module for shots you take when shooting tethered. For more information on the Create Custom Lens Calibration Files wizard, and on loading a custom lens calibration file, refer to the Leaf Capture help system.

Note: The wizard recommends that the peak of your histogram falls between +1.8 and +2.3 f-stops. It should read that the **right hand side** of your histogram should fall between +1.0 and +2.3 f-stops.

In some cases, you are instructed to "request a falloff correction of less than 0 percent". This should read as "not more than 0 percent".

Apply Lens Calibration to Your Images

When you shoot images with wide angle lenses, you typically take a diffused lens calibration shot with each camera and lens setup during scene capture.

You can correct the cast effect in your shots after the shoot by applying the diffused lens calibration shot to your images through processing to create new raw files. Process two or more images together, setting one file as the lens calibration file. For more information on applying lens calibration to your images, refer to the help system.

For more information on cast effects in wide angle photography and the suggested workflow for taking wide angle shots, refer to the Custom Gain Adjuster documentation on the web:

<https://www.leaf-photography.com/ShowFaq.asp?MenuID=373&ParentMenuID=355>

Note: When creating a custom lens calibration file, ensure that the right hand side of the diffuse shot histogram falls between +1.0 and +2.3 f-stops.

Flag Behavior

Flag behavior in multiple selections has been improved in this version of the Leaf Capture software. You can now flag a single image in a group of selected images. For more information on flag behavior, refer to the help system.

Firmware Update

This version of the Leaf Capture software automatically updates the Leaf AFi camera and Leaf imaging module firmware if necessary.

JPEG Preview

You can now set the size of the JPEG preview to 2560 x 1600 (height x width) pixels.

Other Features

In addition, the Leaf Capture 11.1 Windows version contains the following features:

- Live View
- Layout Overlay
- Grid Overlay
- Color Temperature Slider
- Leaf WiView
- Auto-Save Flags
- Leaf Capture Preferences
- Collapsible Sections in the Shoot Panel
- File Numbering Separator
- Shooting Compressed Images When Tethered
- Easy-to-Access ISO Setting

Known Issues

This section lists known problems in the Leaf Capture software and imaging module. When a problem listed here is resolved, the solution is described in the *Fixed Issues* section of the release notes for the next version of the Leaf Capture software.

Processing During Shoot Burst

In order to maximize your shooting speed, it is recommended that you do not process your images while shooting.

Shooting Compressed

When shooting compressed, some images may not compress. After shooting, verify that your files are compressed by checking the file size.

Tip: Compress any uncompressed files by processing to **Leaf Mos** format and selecting **Save Compressed** in the settings.

Performing Lens Calibration

In some cases, when applying lens calibration to an image and saving the image compressed, an error message is received.

Workaround: Restart the Leaf Capture software.

Firmware

This version of Leaf Capture is released with firmware version 2.0.9 for your Leaf AFi camera system.

Version 2.0.9 improvements:

- Accurate reading of Variogon 60-140
- Improved autofocus recognition of more complex targets
- New softkey option
- Lock controls
- Accurate aperture reading of MF lenses
- Improved synchronization of TTL flash

For a history of firmware versions, go to www.leaf-photography.com.