



# Release Notes

# Leaf Capture Software Version 11.2.9

Revised 5 November 2009

## Copyright

© Leaf Imaging Ltd. 2009. All rights reserved. Leaf, the Leaf logo, and Aptus are trademarks of Leaf Imaging Ltd.

This document is also distributed in Adobe Systems Incorporated's PDF (Portable Document Format). You may reproduce the document from the PDF file for internal use. Copies produced from the PDF file must be reproduced in whole.

## Trademarks

Leaf Imaging Ltd. and Leaf are trademarks of Leaf Imaging Ltd..

Adobe, Acrobat, Adobe Illustrator, Distiller, Photoshop, PostScript, and PageMaker are trademarks of Adobe Systems Incorporated.

Apple, iMac, Power Macintosh, Mac OS, AppleShare, AppleTalk, TrueType, ImageWriter, and LaserWriter are registered trademarks of Apple Computer, Inc. Macintosh is a trademark of Apple Computer, Inc., registered in the U.S.A. and other countries.

## FCC Compliance

Any Leaf Imaging Ltd. equipment referred to in this document complies with the requirements in part 15 of the FCC Rules for a Class A digital device. Operation of the Leaf Imaging Ltd. equipment in a residential area may cause unacceptable interference to radio and TV reception, requiring the operator to take whatever steps are necessary to correct the interference.

## Equipment Recycling



In the European Union, this symbol indicates that when the last user wishes to discard this product, it must be sent to appropriate facilities for recovery and recycling.

Contact your local Leaf Imaging Ltd. representative for information on the collection and recovery programs available for this product.

## Limitation of Liability

The product, software or services are being provided on an "as is" and "as available" basis. Except as may be stated specifically in your contract, Leaf Imaging Ltd. expressly disclaims all warranties of any kind, whether express or implied, including, but not limited to, any implied warranties of merchantability, fitness for a particular purpose and non-infringement.

You understand and agree that, except as may be stated specifically in your contract, Leaf Imaging Ltd. shall not be liable for any direct, indirect, incidental, special, consequential or exemplary damages, including but not limited to, damages for loss of profits, goodwill, use, data or other intangible losses (even if Leaf Imaging Ltd. has been advised of the possibility of such damages), resulting from: (i) the use or the inability to use the product or software; (ii) the cost of procurement of substitute goods and services resulting from any products, goods, data, software, information or services purchased; (iii) unauthorized access to or alteration of your products, software or data; (iv) statements or conduct of any third party; (v) any other matter relating to the product, software, or services.

The text and drawings herein are for illustration and reference only. The specifications on which they are based are subject to change. Leaf Imaging Ltd. may, at any time and without notice, make changes to this document. Leaf Imaging Ltd. assumes no liability for technical or editorial errors or omissions made herein, and shall not be liable for incidental, consequential, indirect, or special damages, including, without limitation, loss of use, loss or alteration of data, delays, or lost profits or savings arising from the use of this document.

<http://www.leaf-photography.com>

Revised 5 November 2009

# Contents

---

Introduction.....	1
Key Features .....	2
Uploading Firmware to Leaf Aptus Camera Backs.....	3
Minimum system requirements.....	4
Recommended system specifications for high resolution backs .....	4
Leaf Capture version for non-Intel Macs .....	<b>Error! Bookmark not defined.</b>
Leaf product compatibility.....	6
About Leaf Capture Installation .....	6
Known Issues .....	7

## Introduction

Leaf® Capture is an image capture and processing workflow software that has been designed for you to make the most of the images you take with your Leaf products, and to improve your productivity.

The intuitive Leaf Capture user interface guides you through the image capture workflow. Since you can use it to check and perfect your images while you shoot, Leaf Capture serves as the ideal match for high-volume productions on tight deadlines, such as catalog and fashion shoots. Leaf Capture enables you to produce outstanding quality images with fine details and accurate colors. Since the software is focused on professional photographic requirements, it supports editing and managing of files in both tethered and portable shooting modes.

## Key Features

### Enhanced camera functionality

Remote Shooting is available with Phase One cameras and Mamiya 645 AFD II and above (requires a firmware update) \*.

### Enhanced image processing

When shooting with the 56 MP or 33 MP camera back, Leaf Capture will correct artifacts minimizing the need to use a lens calibration file.

In addition, files that were shot compressed to a CF card will be corrected when opening them in Leaf Capture.

When using non-retrofocal wide-angle lenses you may still need to perform a lens calibration to remove color casts and luminance falloff.

### Enhanced Speed Performance

Computer resources usage is optimized to enable faster performance. This enhancement is limited to Recommended System Specifications.

### New Operating System Support

Apple OS X 10.6.x is supported.

\* Certain specific functions, released in Leaf Capture 11.2.9 and in future Leaf Imaging software versions, require new firmware to be uploaded to the Leaf digital back. New Leaf Capture versions can only upload firmware to digital backs manufactured by Leaf Imaging, or that have been updated by Leaf Imaging support. Other Leaf Aptus users can work with any Leaf Capture software version, however new firmware will not be uploaded to the back.

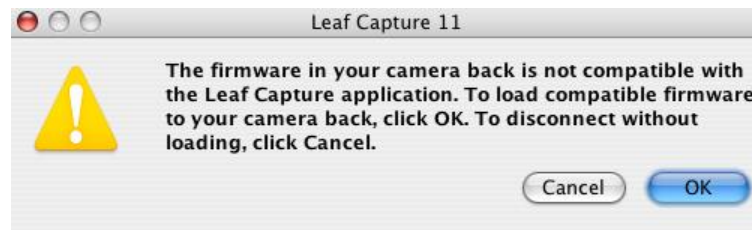
## Uploading Firmware to Leaf Aptus Camera Backs

When connecting a Leaf camera back to Leaf Capture v11.2.9 for the first time, follow this procedure to ensure that the new firmware will be loaded to the camera back\*:

1. Launch the Leaf Capture software.
2. Connect your camera back to the computer.

The firmware is uploaded.

3. Depending on your hardware, when you connect your camera back to the Leaf Capture software, the following message may appear:



Click OK. The camera back firmware is updated.  
This process takes several minutes.

\* Certain specific functions, released in Leaf Capture 11.2.9 and in future Leaf Imaging software versions, require new firmware to be uploaded to the Leaf digital back. New Leaf Capture versions can only upload firmware to digital backs manufactured by Leaf Imaging, or that have been updated by Leaf Imaging support. Other Leaf Aptus users can work with any Leaf Capture software version, however new firmware will not be uploaded to the back.

## Minimum system requirements

The following system components are required for running the Leaf Capture software:

	Intel-based Macintosh
Processor	Intel® Dual core Xeon®
Processor speed	1.83 GHz
Memory	2 GB
Operating system	Mac OS X version 10.5

## Recommended system specifications for high resolution backs

	Intel Based Macintosh
Processor	Intel Quad Core Xeon
Processor speed	2.8 GHz
Memory	4 GB or more
Operating system	Mac OS X version 10.6

## Support for Macs with 32 bit processors

Leaf Capture v. 11.2.9 is compatible with 64 bit Intel-based Macs.

You will need to determine if your Mac has a 64 bit processor.

If your Mac has a 32 bit processor, then you should be using the Leaf Capture 11.2.9 (32 bit) version, with Mac OS 10.5.8 Leopard.

### Determining whether your Mac has a 64-bit or 32-bit processor

1. Choose About This Mac from the Apple menu in the upper-left menu bar. .



2. Compare your Processor Name to information below to determine whether your Mac has a 64-bit or 32-bit processor.

Processor Name	64- or 32-bit
Intel Core 2 Duo	64 bit
Intel Dual Core Xeon	64 bit
Intel Quad-Core Xeon	64 bit
Intel Core Solo	32 bit
Intel Core Duo	32 bit
PowerPC	32 bit

## Leaf product compatibility

Please review the product information in the Read Me section during the installation process.

## About Leaf Capture Installation

### Installing Leaf Capture

The Leaf Capture installation wizard requires that no other applications are running during the installation. If you are working in other applications, make sure you save your work before launching the Leaf Capture installation.

### Computer Restarts after Installation

If a driver that is new to your computer is installed during the Leaf Capture version 11.2.9 software installation, Leaf Capture restarts your computer at the end of the installation. If you are working in other applications, make sure you save your work first.

### Preferences are Reset after Installation

The installation automatically resets your Leaf Capture preferences.

**Note:** If you have multiple user accounts, the preferences are reset only for the user who installs the Leaf Capture software. All other users must manually reset their preferences:

- Locate **Applications > Leaf Capture 11 > Utilities**, and double-click **Reset Preferences**.

## Known Issues

This section lists known issues in the Leaf Capture software and camera back. They may be outstanding issues from a previous release, or new issues.

### Leaf Capture Software Issues

#### Live Preview with Leaf Aptus-II 5

Only black and white Live Preview is available.

#### Formatting CF card on OS X 10.6

When formatting your CF card on OS X 10.6, the following selections need be made in the Disk Utility 'Partitions' tab:

- Volume scheme : 1 Partition
- Format: MS DOS (FAT)
- Option: Master Boot Record